

Towards Location Based Learning

Prof. Dr.-Ing. Georg J. Schneider

Multimedia and Media Informatics


Department Informatik

University of Applied Sciences Trier

State of the Art

- Mobile Learning
 - Facet of E-learning
 - Wherever, Whenever, Whatever (with arbitrary information access device)
- Projects and Systems
 - <http://pocket.fernuni-hagen.de/>
 - <http://serverprojekt.fh-joanneum.at/sp/material/mobillearn>
 - <http://www.elibera.com/>

Example


 :: MLE > Features der MLE >
 Fragetypen > Single Choice


Die MLE unterstützt:

- keine Single Choice Fragen
- Single Choice Fragen nur bei abnehmendem Mond
- Single Choice Fragen

LÖSUNG

Seite 3 von 3

100% 


 :: MLE > Features der MLE >
 Fragetypen > Multiple Choice

Die MLE ist:

- absolut spitze!
- das Beste was Sie je gesehen haben!
- nicht so gut

LÖSUNG

Seite 3 von 3

100% 

 :: MLE > Features der MLE >
 Fragetypen > grafische
 interaktive Fragen

Markieren Sie die Leber und den Magen in dieser Abbildung:



 :: Für Test-Zwecke > EDEN

Darstellung von Audio und Video

Audio und **Video** wird mittels Buttons innerhalb eines Objektes gekennzeichnet

-  Audio
-  Video

Seite 3 von 3

100% 

Characteristics

- „Extended“ E-learning scenarios.
- Systems do not make use of the learners position.
- Content is independent of the learners location.
- Learners place mostly influences the information access, e.g. network capacities, access device but not the content.

Location Based Learning

- Also part of E-learning.
- Content depends on the learners location.
- Location is beneficial (or even essential) to learn a certain content.
- Higher learning success (?)

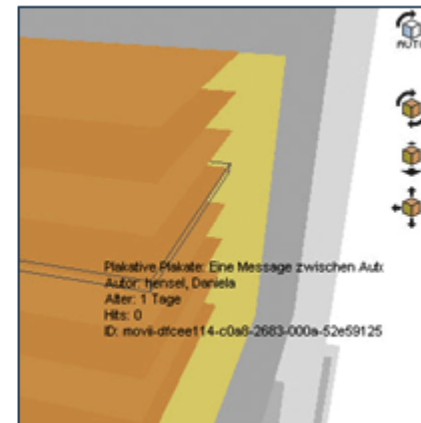
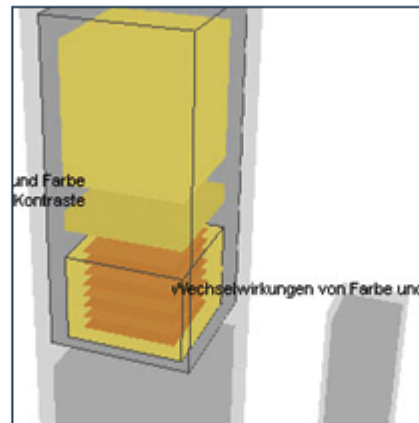
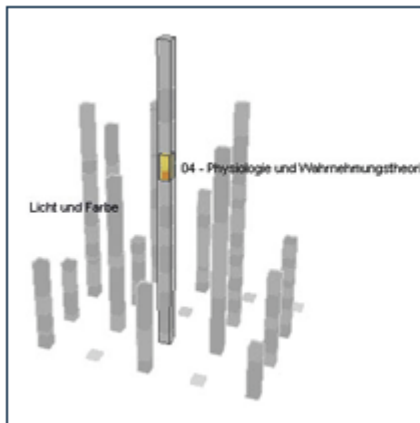
Scenario

- Architecture, History, Art.
- Content in Context.
- Preserve and reuse newly created content
 - Background Knowledge from lectures
 - Special Knowledge from exhibitions

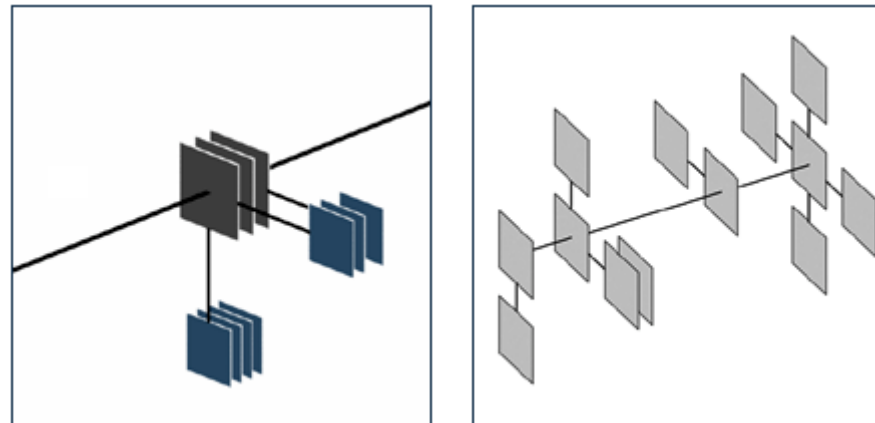
Scenario

- Challenges
 - Projecting learning content into the real world.
 - Mapping between E-learning systems and location based guides.

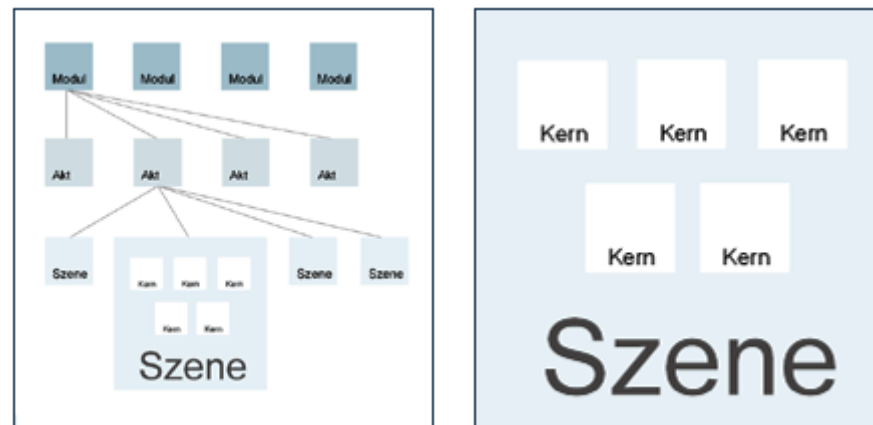
Excursus: E-learning with MOVII



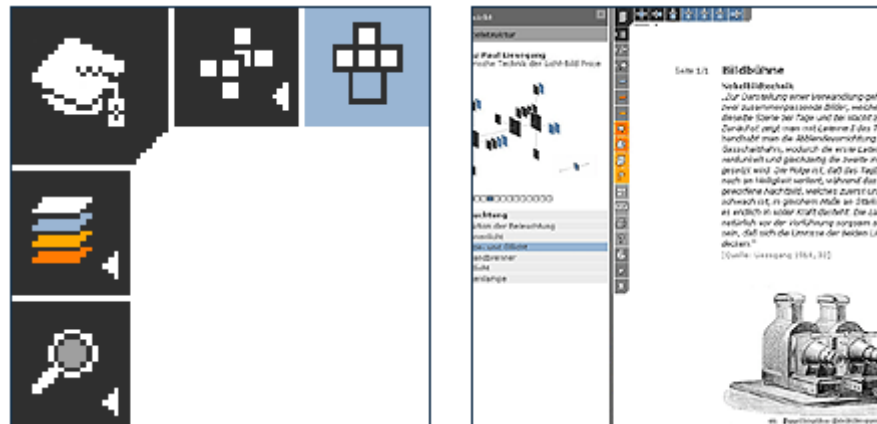
Excursus: E-learning with MOVII



Excursus: E-learning with MOVII



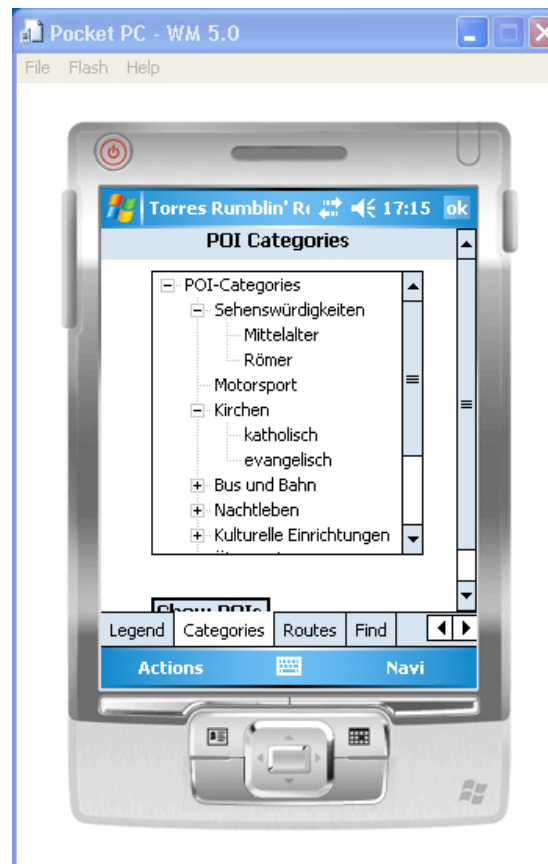
Excursus: E-learning with MOVII



Mobile Extension

- Points of Interest
 - POI's, Inner POI's
- Categories
- Routes
- Maps

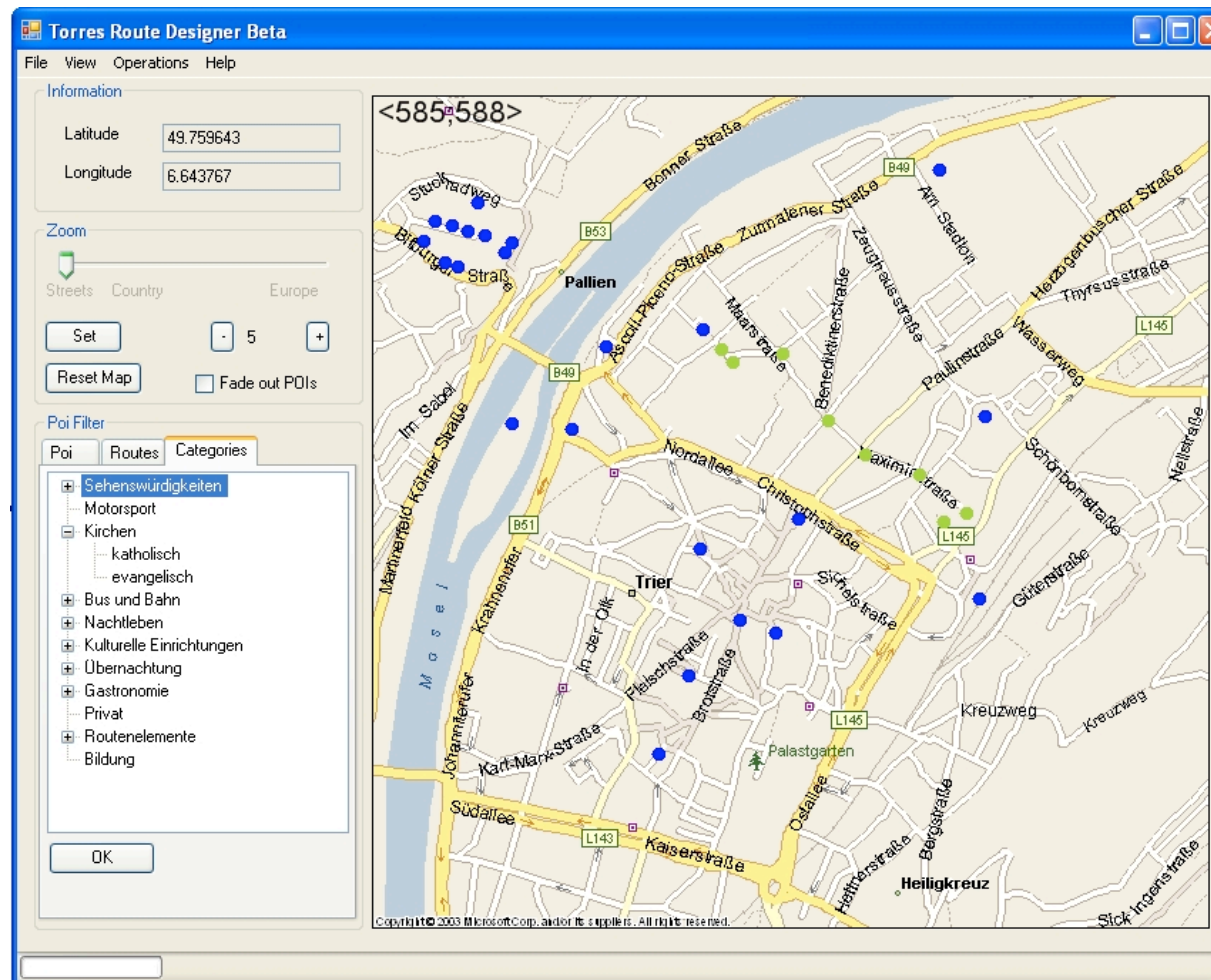
Mobile Extension



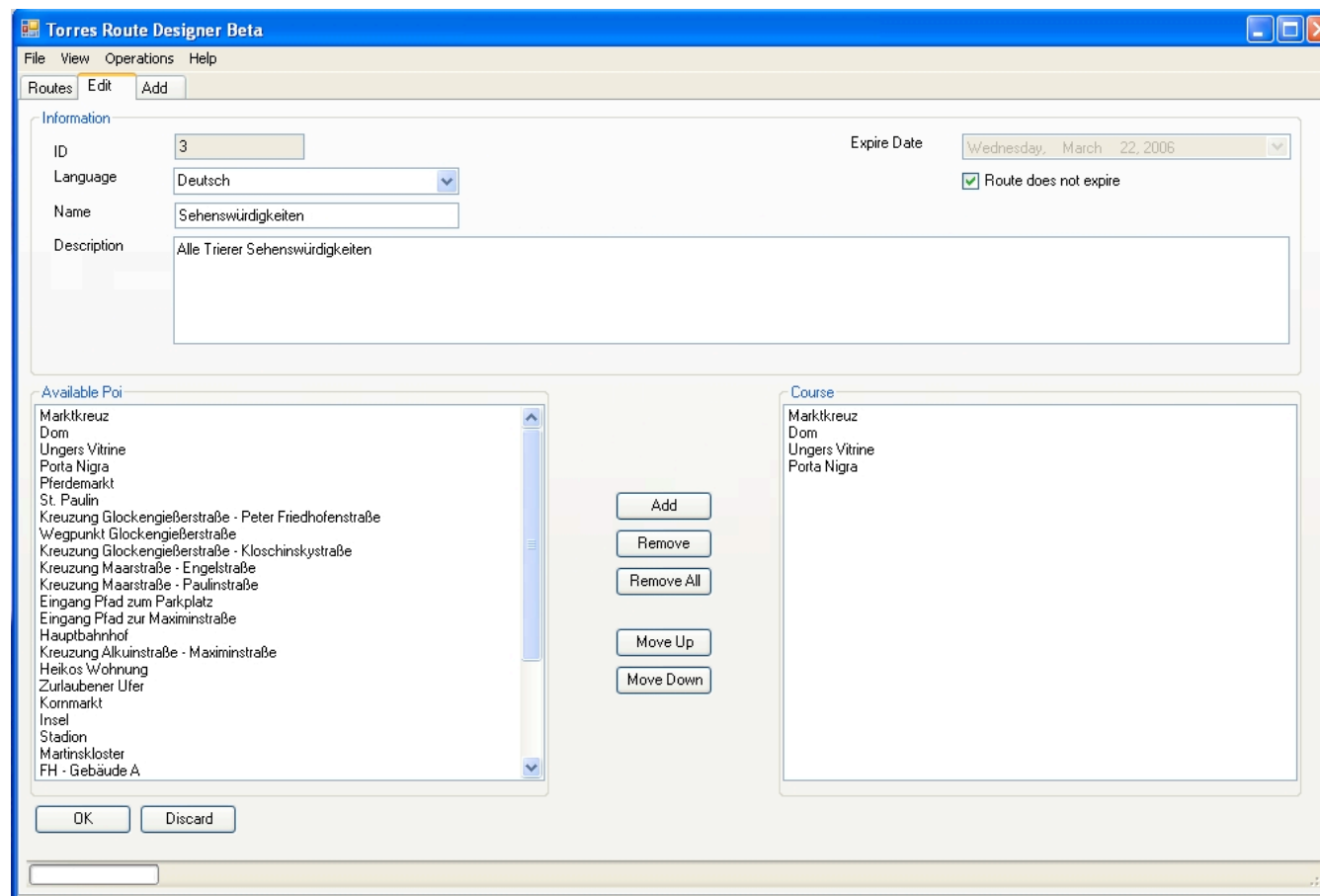
Mobile Extension



Mobile Extension



Mobile Extension



ToDos

- Mapping of POI's and Routes to Learning Paths and Vice Versa
- Enriching conventional learning content with spatial attributes
- System Integration and Test